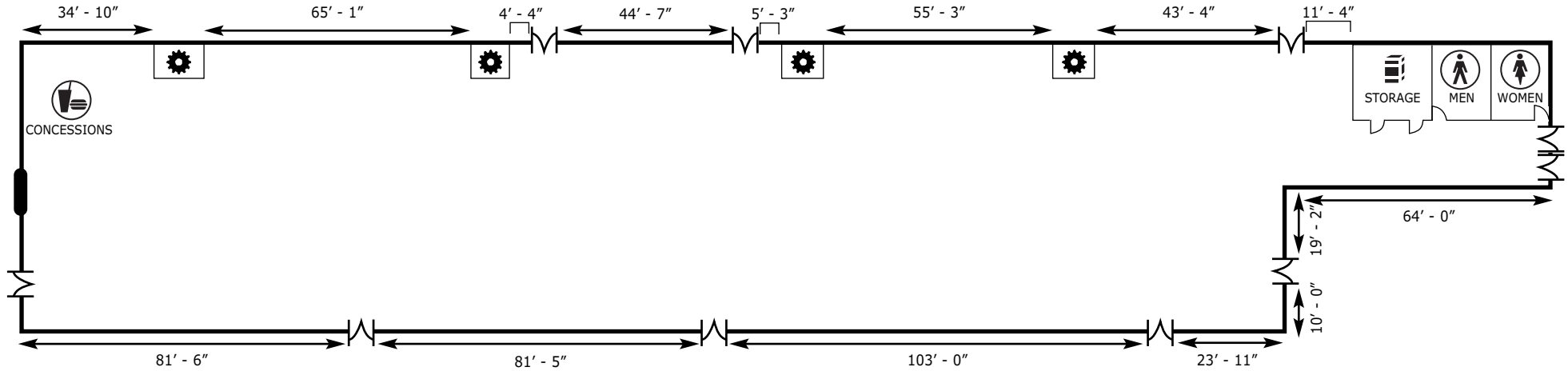


Vaughan Building

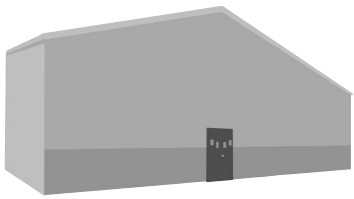
The Vaughan Building has more than 21,012 square feet of floor space and can accommodate major product displays and trade shows. The building also accommodates large group events including themed receptions and meetings.



BUILDING	THEATER	SCHOOLROOM	BANQUETS OF 10	RECEPTION	BOOTHS 10 X 10	WIDTH	LENGTH	TOTAL SQ. FT.	CEILING HT.
Vaughan	1,059	529	1,350	1,450	101	68'	309'	21,012	7'10" – 17'



The Vaughan Building has a concrete floor with load capacity of 3,000 lbs, one double hinged freight door measuring 8' x 7', one 14' x 13' 10" roll up freight door, 1,200 amp, 208/120 volt electrical service, 3 rows of electric drops 20 ft. apart in ceiling, outside rows have 14 electric drops and middle row has 28 electric drops 10 ft. apart.

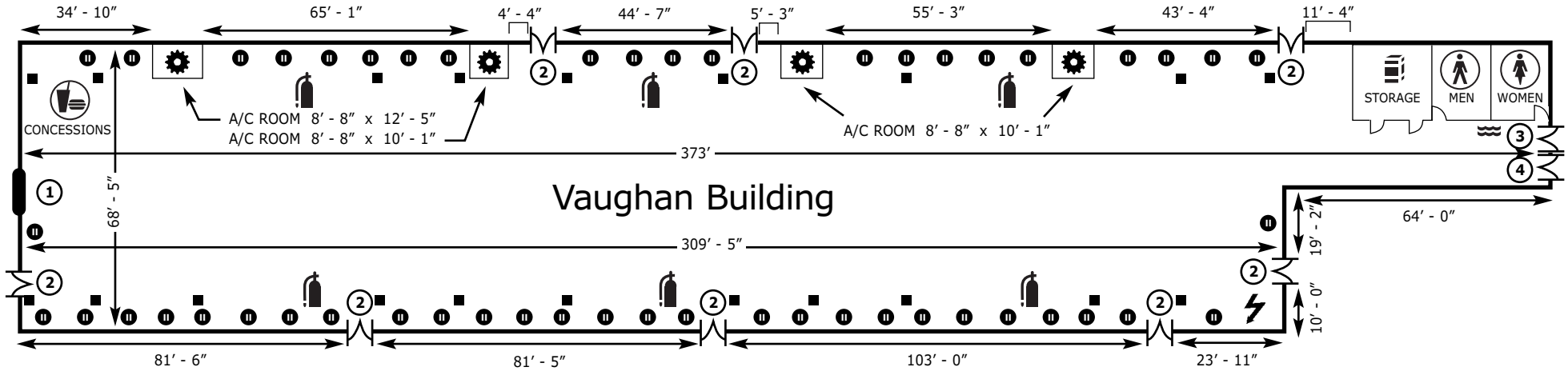


Vaughan Building

The Vaughan Building has more than 21,012 square feet of floor space and can accommodate major product displays and trade shows. The building also accommodates large group events including themed receptions and meetings.



BUILDING	THEATER	SCHOOLROOM	BANQUETS OF 10	RECEPTION	BOOTHS 10 X 10	WIDTH	LENGTH	TOTAL SQ. FT.	CEILING HT.
Vaughan	1,059	529	1,350	1,450	101	68'	309'	21,012	7'10" - 17'



- Fire Extinguisher
- Women's Restroom
- Men's Restroom
- Concessions
- Storage
- Water Fountain
- Column
- Mechanical
- Electrical Outlet
- Electrical Panel
- 14' x 13' 10" Roll Up Door
- 3' x 7' Double Doors
- 3' x 7' Door
- 8' x 7' Double Hinged Door

The Vaughan Building has a concrete floor with load capacity of 3,000 lbs, one double hinged freight door measuring 8' x 7', one 14' x 13' 10" roll up freight door, 1,200 amp, 208/120 volt electrical service, 3 rows of electric drops 20 ft. apart in ceiling, outside rows have 14 electric drops and middle row has 28 electric drops 10 ft. apart.