

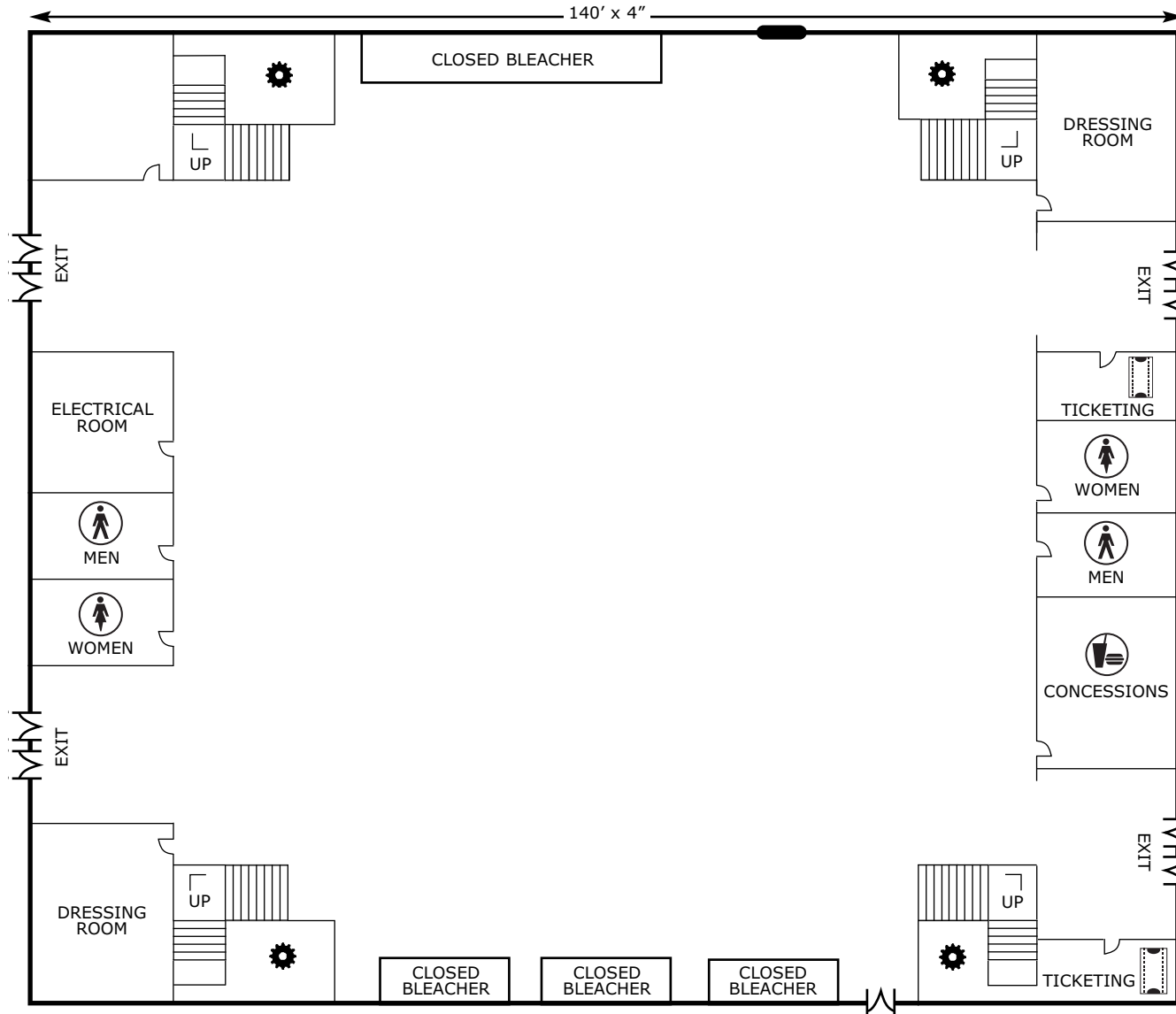
Sports Arena

The Sports Arena has 11,024 square feet of floor space and serves as a venue for musical performance, television production, and large group events.

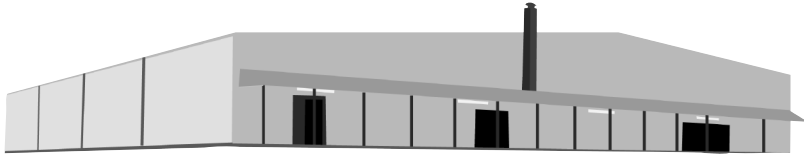
The building has bleachers that accommodate up to 2,500 people with both floor and balcony seating.



BUILDING	THEATER	SCHOOLROOM	BANQUETS OF 10	RECEPTION	BOOTHS 10 X 10	WIDTH	LENGTH	TOTAL SQ. FT.	CEILING HT.
Sports Arena									
Bleachers closed	672	336	600	700	54	104'	106'	11,024	20'
Bleachers extended	336	168	400	500	40	104'	64'	6,656	20'



The Sports Arena has a concrete floor with a pre-stressed load capacity, 12' x 14' roll up freight door, and 1,000 amp, 208 volt electrical service.



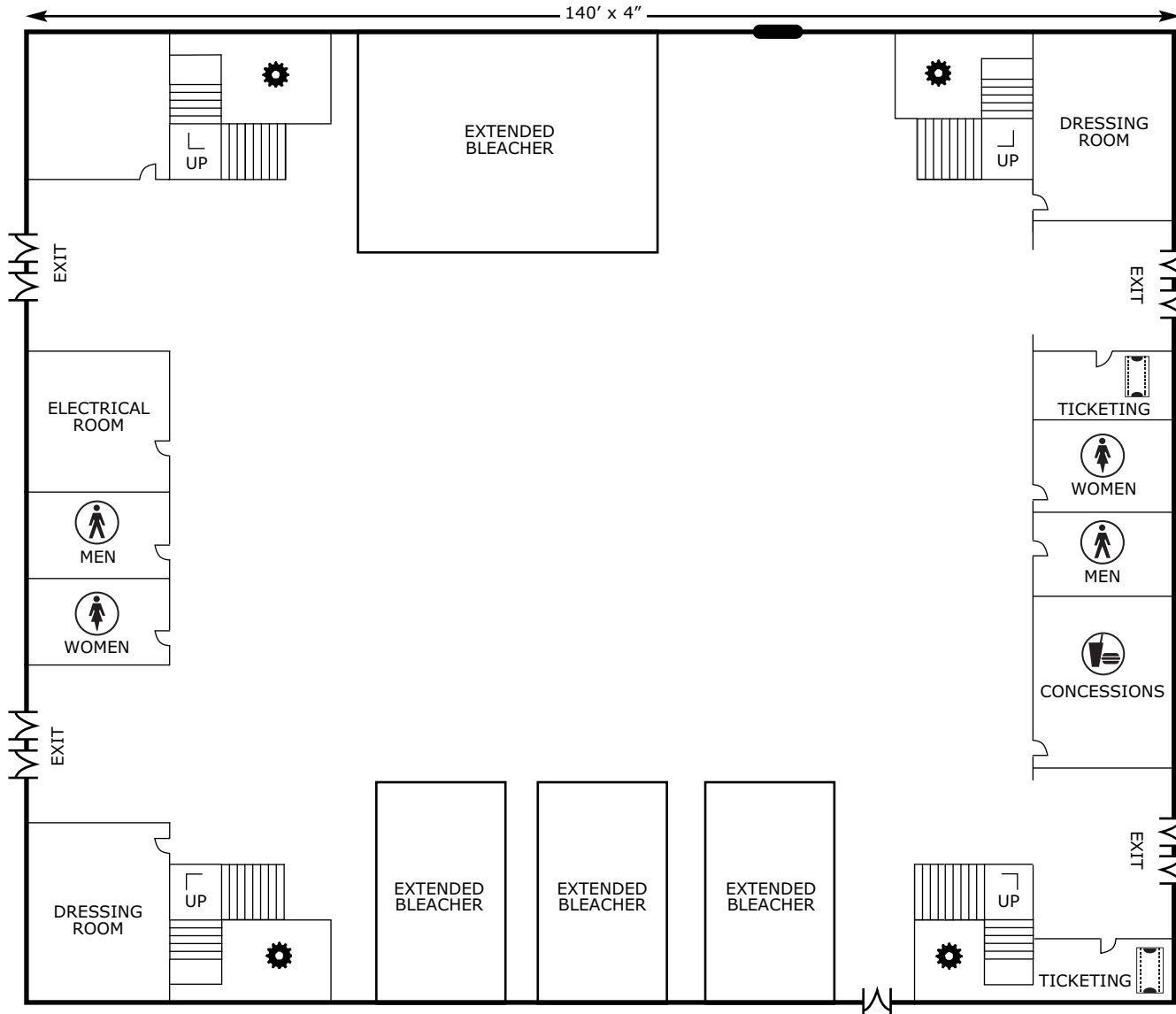
Sports Arena

The Sports Arena has 11,024 square feet of floor space and serves as a venue for musical performance, television production, and large group events.

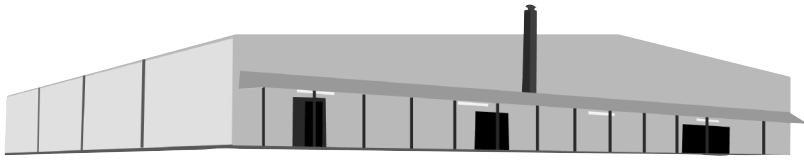
The building has bleachers that accommodate up to 2,500 people with both floor and balcony seating.



BUILDING	THEATER	SCHOOLROOM	BANQUETS OF 10	RECEPTION	BOOTHES 10 X 10	WIDTH	LENGTH	TOTAL SQ. FT.	CEILING HT.
Sports Arena									
Bleachers closed	672	336	600	700	54	104'	106'	11,024	20'
Bleachers extended	336	168	400	500	40	104'	64'	6,656	20'



The Sports Arena has a concrete floor with a pre-stressed load capacity, 12' x 14' roll up freight door, and 1,000 amp, 208 volt electrical service.



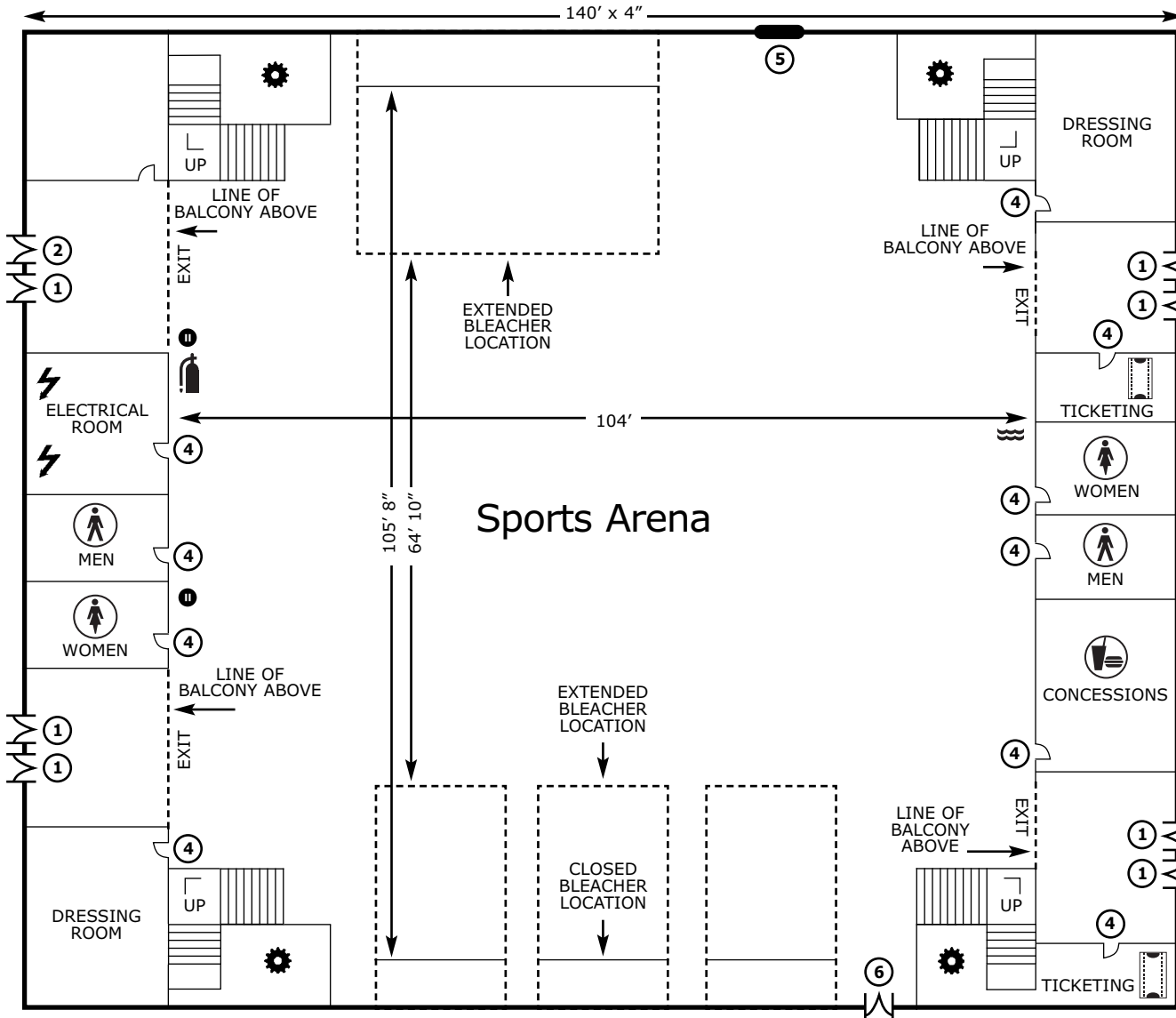
Sports Arena

The Sports Arena has 11,024 square feet of floor space and serves as a venue for musical performance, television production, and large group events.

The building has bleachers that accommodate up to 2,500 people with both floor and balcony seating.

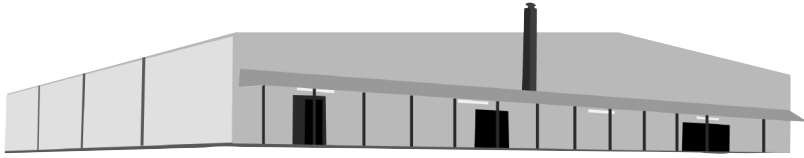


BUILDING	THEATER	SCHOOLROOM	BANQUETS OF 10	RECEPTION	BOOTHS 10 X 10	WIDTH	LENGTH	TOTAL SQ. FT.	CEILING HT.
Sports Arena									
Bleachers closed	672	336	600	700	54	104'	106'	11,024	20'
Bleachers extended	336	168	400	500	40	104'	64'	6,656	20'



- Fire Extinguisher
- Women's Restroom
- Men's Restroom
- Concessions
- Water Fountain
- Mechanical
- Ticketing
- Electrical Outlet
- Electrical Panel
- 4' x 8' Metal Double Doors
- 4' x 6' Metal Double Doors
- 3' 0" x 6' 8" Wood Double Doors
- 3' 6" x 8" Wood Doors
- 12" x 14" Roll Up Door
- 3' 6" x 8" Metal Doors

The Sports Arena has a concrete floor with a pre-stressed load capacity, 12' x 14' roll up freight door, and 1,000 amp, 208 volt electrical service.



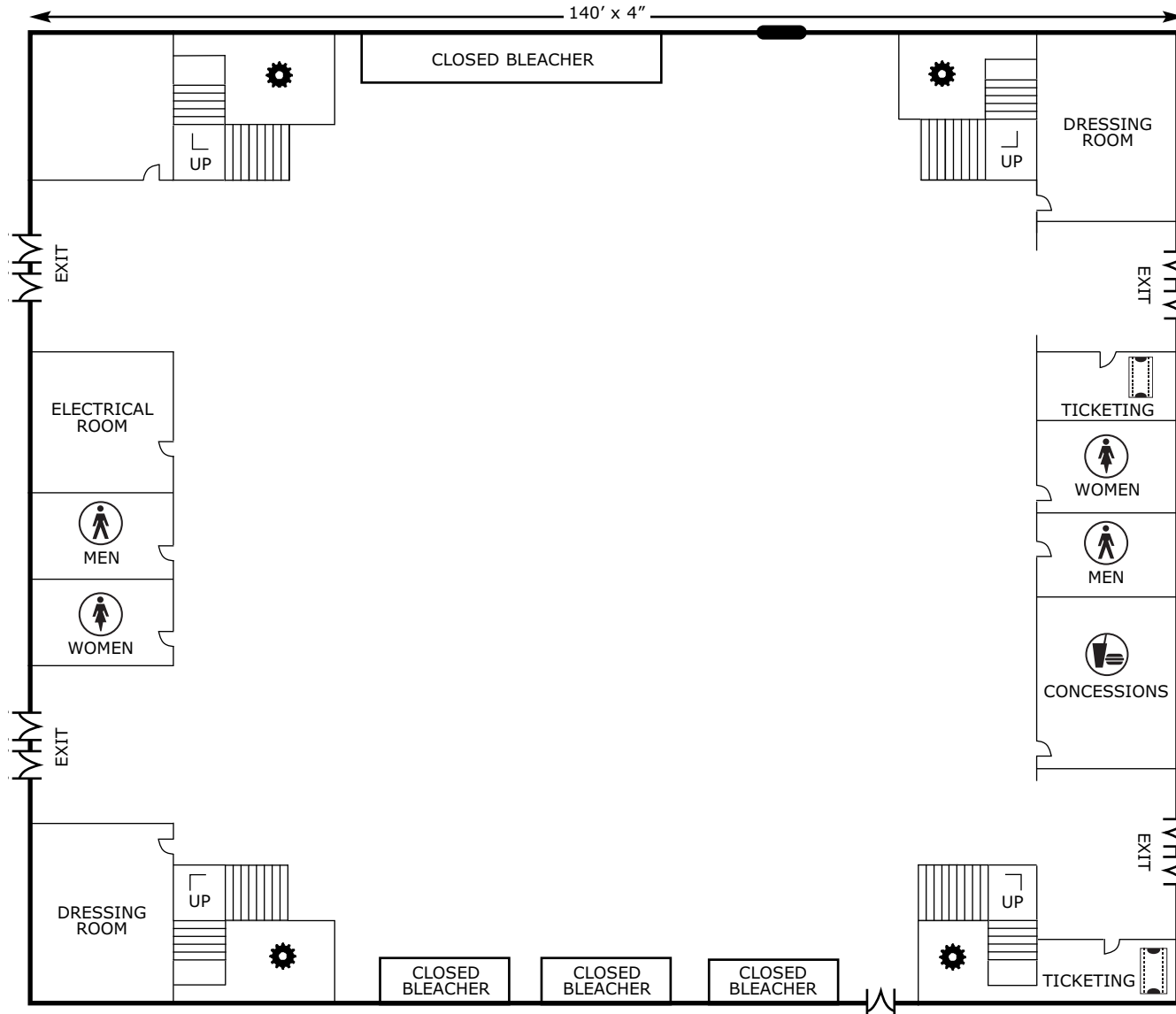
Sports Arena

The Sports Arena has 11,024 square feet of floor space and serves as a venue for musical performance, television production, and large group events.

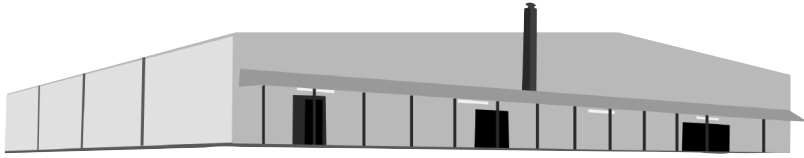
The building has bleachers that accommodate up to 2,500 people with both floor and balcony seating.



BUILDING	THEATER	SCHOOLROOM	BANQUETS OF 10	RECEPTION	BOOTHS 10 X 10	WIDTH	LENGTH	TOTAL SQ. FT.	CEILING HT.
Sports Arena									
Bleachers closed	672	336	600	700	54	104'	106'	11,024	20'
Bleachers extended	336	168	400	500	40	104'	64'	6,656	20'



The Sports Arena has a concrete floor with a pre-stressed load capacity, 12' x 14' roll up freight door, and 1,000 amp, 208 volt electrical service.



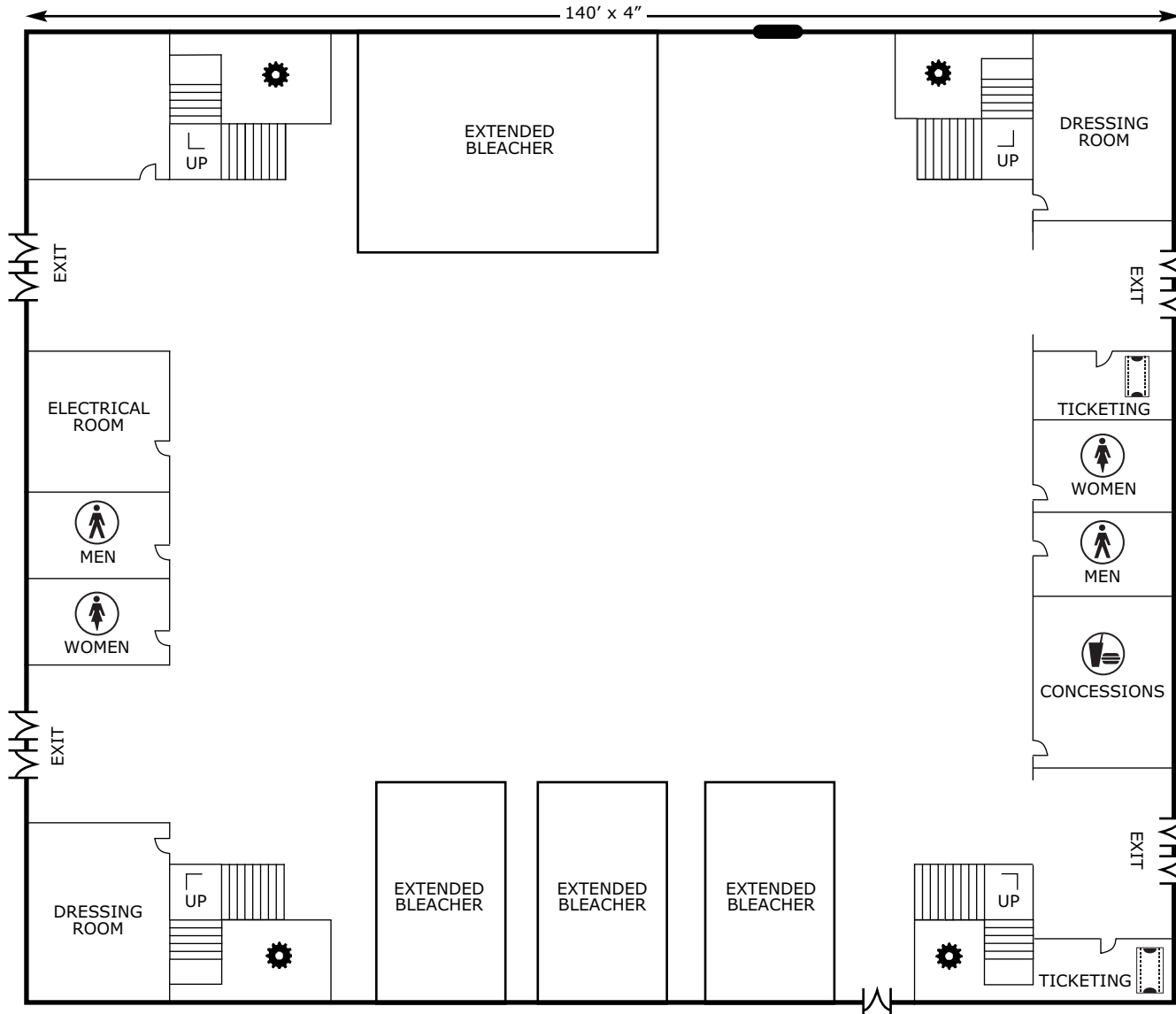
Sports Arena

The Sports Arena has 11,024 square feet of floor space and serves as a venue for musical performance, television production, and large group events.

The building has bleachers that accommodate up to 2,500 people with both floor and balcony seating.



BUILDING	THEATER	SCHOOLROOM	BANQUETS OF 10	RECEPTION	BOOTHES 10 X 10	WIDTH	LENGTH	TOTAL SQ. FT.	CEILING HT.
Sports Arena									
Bleachers closed	672	336	600	700	54	104'	106'	11,024	20'
Bleachers extended	336	168	400	500	40	104'	64'	6,656	20'



The Sports Arena has a concrete floor with a pre-stressed load capacity, 12' x 14' roll up freight door, and 1,000 amp, 208 volt electrical service.