

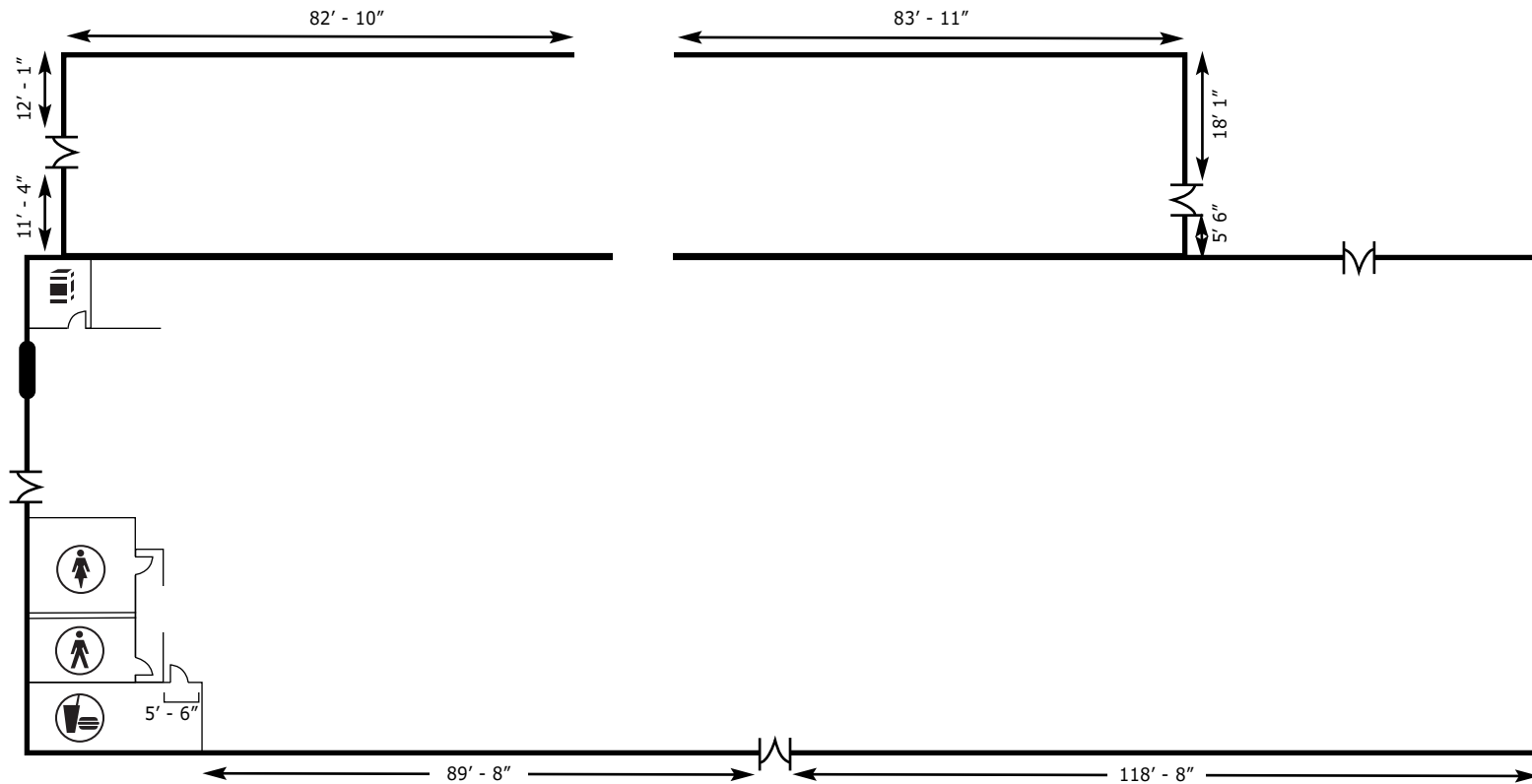
Exhibitors Building & Annex

The Exhibitors Building has 17,325 square feet of floor space and is ideal for trade shows and product displays.

The building accommodates large group events including themed receptions and meetings.

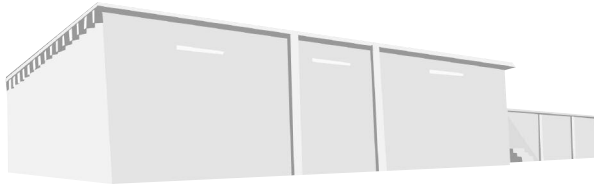
The Exhibitors Building is attached to the Creative Arts Building by way of the Annex. These three structures can be rented in any combination for larger events.

BUILDING	THEATER	SCHOOLROOM	BANQUETS OF 10	RECEPTION	BOOTHS 10 X 10	WIDTH	LENGTH	TOTAL SQ. FT.	CEILING HT.
Exhibitors Bldg	840	420	1,200	1,300	89	225'	77'	17,325	11'
Annex	300	150	330	450	30	30'	182'	5,460	11'8"



The Exhibitors Building has a concrete floor with a pre-stressed load capacity, 11'10"x9'9" roll up freight door, 15'x9' roll up connector door, and 400 amp, 208 volt electrical service.

The Annex has a concrete floor with load capacity of 3,000 lbs, 100 amp, 208 volt electrical service, electric drops in ceiling, and 3 rows for 11 electric outlets. The Annex is not rented by itself. The Annex is only rented with the Creative Arts Building or Exhibitors Building.



Exhibitors Building & Annex

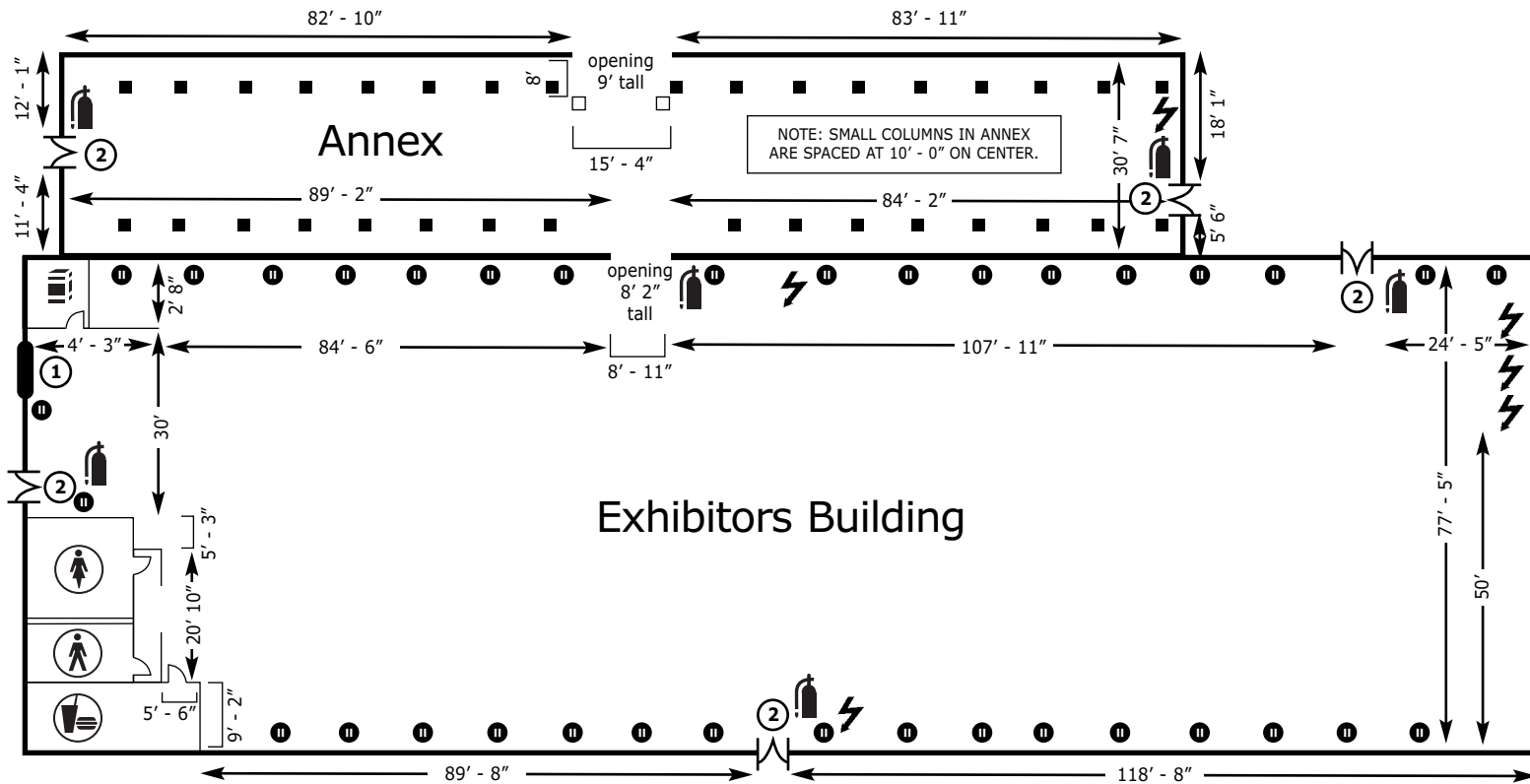
The Exhibitors Building has 17,325 square feet of floor space and is ideal for trade shows and product displays.

The building accommodates large group events including themed receptions and meetings.

The Exhibitors Building is attached to the Creative Arts Building by way of the Annex.

These three structures can be rented in any combination for larger events.

BUILDING	THEATER	SCHOOLROOM	BANQUETS OF 10	RECEPTION	BOOTHS 10 X 10	WIDTH	LENGTH	TOTAL SQ. FT.	CEILING HT.
Exhibitors Bldg	840	420	1,200	1,300	89	225'	77'	17,325	11'
Annex	300	150	330	450	30	30'	182'	5,460	11'8"



- Fire Extinguisher
- Women's Restroom
- Men's Restroom
- Concession
- Storage
- Water Fountain
- Column
- Mechanical
- Electrical Outlet
- Electrical Panel
- 12' x 12' Roll Up Door
- 3' x 7' Double Doors

The Exhibitors Building has a concrete floor with a pre-stressed load capacity, 11'10"x9'9" roll up freight door, 15'x9' roll up connector door, and 400 amp, 208 volt electrical service.

The Annex has a concrete floor with load capacity of 3,000 lbs, 100 amp, 208 volt electrical service, electric drops in ceiling, and 3 rows for 11 electric outlets. The Annex is not rented by itself. The Annex is only rented with the Creative Arts Building or Exhibitors Building.